



# Ashokdada Sable Law College

**LL.B. 3 Year / LL.B. 5 Year / LL.M.**

Tal. Mangaon, Dist. Raigad. 402 104

ashokdadasablelawcollege@gmail.com

Adv. Vinod Ghayal  
Chairman

Shri. Rajiv Sable  
President

Shri. Krishna Gandhi  
Secretary

Dr. Sonali Burte  
Principal

## CRITERION - 7 INSTITUTIONAL VALUES & BEST PRACTICES

### 7.3.1 INSTITUTIONAL DISTINCTIVENESS

### 7.3.1 Quality Educational Institute



# Ashokdada Sable Law College

**LL.B. 3 Year / LL.B. 5 Year / LL.M.**

Tal. Mangaon, Dist. Raigad. 402 104

ashokdadasablelawcollege@gmail.com

**Adv. Vinod Ghayal**  
Chairman

**Shri. Rajiv Sable**  
President

**Shri. Krishna Gandhi**  
Secretary

**Dr. Sonali Burte**  
Principal

## 7.3.1 Quality Educational Institute



  
Principal  
Ashokdada Sable Law College  
Mangaon-Raigad



# Ashokdada Sable Law College

**LL.B. 3 Year / LL.B. 5 Year / LL.M.**

Tal. Mangaon, Dist. Raigad. 402 104

ashokdadasablelawcollege@gmail.com

Adv. Vinod Ghayal  
Chairman

Shri. Rajiv Sable  
President

Shri. Krishna Gandhi  
Secretary

Dr. Sonali Burte  
Principal

## 7.3.1

### Distinctiveness of Institution.

#### **Performance of the Institution in one area Distinctiveness to its priority and thrust-**

Late Ex. MLA – Public service leader- ASHOKDADA SABLE has vision that ‘Education for all, especially for deprived mass to eradicate social evil. He established Mangaon Shikshan Prasarak Mandal in Mangaon-Raigad. His every educational establishment is mission for social reform.

The Distinctiveness of HEI is in name of ASHOKDADA SABLE. The law college in rural – Hilly and poverty-stricken taluka- Mangaon is its distinctiveness.

The location of ASHOKDADA SABLE LAW COLLEGE is its self-second distinctiveness. College is located in same survey number campus of SUB-DISTRICT COURT of Mangaon. Judicial legal students’ academic training center is Ashokdada Sable Law College while professional training center - court is in same place. A single wall separates both EPIC institutions.



  
Principal  
Ashokdada Sable Law College  
Mangaon-Raigad



# Ashokdada Sable Law College

**LL.B. 3 Year / LL.B. 5 Year / LL.M.**

Tal. Mangaon, Dist. Raigad. 402 104

ashokdadasablelawcollege@gmail.com

**Adv. Vinod Ghayal**  
Chairman

**Shri. Rajiv Sable**  
President

**Shri. Krishna Gandhi**  
Secretary

**Dr. Sonali Burte**  
Principal

## A. Dada's Ideology for HEI –

EX.MLA Public Service Leader late ASHOK DADA SABLE was fully conscious about the importance of education as a tool of social justice and equality. The essence of the educational philosophy of late ASHOK DADA SABLE is that Education is human right. Thus, this HEI emerge out, established as a center for social revolution. HEI works for catering judicial education for deprived social area.

## B. Dada's name for HEI –

Distinctiveness of HEI is it named as 'ASHOK DADA SABLE LAW COLLEGE: For Mangaon -Taluka region DADA is social- political angel. His education was up to 7th std he was having small hotel, he was worker, then owner, then social worker, then local political leader and then MLA of Maharashtra for social – educational reformation of Raigad District and Mangaon Taluka in specific.

Life sketch of late DADA means inspiration one worker in hotel canbecome MLA-LAW maker in Legislature Assembly for student of this HEI, distinctiveness of HEI name which inspires to ZERO TO HERO.

## C. Establishment of HEI In Poverty Stricken Hilly Area

HEI is located in Mangaon – Taluka of Raigad district of Maharashtra State. Mangaon region is hilly taluka, economically backward taluka, deprived from urban touch, agriculture-based economy most of population is Kunbi-means workers depends on agriculture and related business. To start HEI which provide professional programme such as LLB, BALLB and PG was challenge.



  
**Principal**  
Ashokdada Sable Law College  
Mangaon-Raigad



# Ashokdada Sable Law College

**LL.B. 3 Year / LL.B. 5 Year / LL.M.**

Tal. Mangaon, Dist. Raigad. 402 104

ashokdadasablelawcollege@gmail.com

**Adv. Vinod Ghayal**  
Chairman

**Shri. Rajiv Sable**  
President

**Shri. Krishna Gandhi**  
Secretary

**Dr. Sonali Burte**  
Principal

The Son of Late ASHOKDADA SABLE is Advocate RAJIV SABLE. He also social political leader as of father. He challenges the challenges. Mangaon Shikshan Prasarak Mandal's President. hence, Advocate Rajiv Sable established Law College in such poverty-stricken area education deprived region. To start – established – run such professional education college in challenged area means itself Destructiveness of HEI.

## **D. Next to District Court Location of HEI –**

ADSLC and District Court of Mangaon is in same primases, same index number of revenue document. Location of ADSLC is district being eligible lawyers can accommodate in career as next door.

HEI's destructiveness is that HEI become the Judicial training center while the court is the practice center, professional center. Its distinctiveness of HEI. The court JUDGES, system inspires, motivate deprived people for legal aid, to learn professional ethics by Advocate in court, Bar's Association functioning, Bar Association experts can resource, commissioned as legal guide, philosophers for HEI, students and faculties.

Location of HEI nest to District court means 'real' 'moot' court- Real Court.



  
Principal  
Ashokdada Sable Law College  
Mangaon-Raigad



# Ashokdada Sable Law College

**LL.B. 3 Year / LL.B. 5 Year / LL.M.**

Tal. Mangaon, Dist. Raigad. 402 104

ashokdadasablelawcollege@gmail.com

**Adv. Vinod Ghayal**  
Chairman

**Shri. Rajiv Sable**  
President

**Shri. Krishna Gandhi**  
Secretary

**Dr. Sonali Burte**  
Principal



Ex. MLA. Late. Ashokdada Sable



*GTm*  
Principal  
Ashokdada Sable Law College  
Mangaon-Raigad



# Ashokdada Sable Law College

**LL.B. 3 Year / LL.B. 5 Year / LL.M.**

Tal. Mangaon, Dist. Raigad. 402 104

ashokdadasablelawcollege@gmail.com

**Adv. Vinod Ghayal**  
Chairman

**Shri. Rajiv Sable**  
President

**Shri. Krishna Gandhi**  
Secretary

**Dr. Sonali Burte**  
Principal



**College Building**



*Signature*  
**Principal**  
Ashokdada Sable Law College  
Mangaon-Raigad



# Ashokdada Sable Law College

**LL.B. 3 Year / LL.B. 5 Year / LL.M.**

Tal. Mangaon, Dist. Raigad. 402 104

ashokdadasablelawcollege@gmail.com

Adv. Vinod Ghayal  
Chairman

Shri. Rajiv Sable  
President

Shri. Krishna Gandhi  
Secretary

Dr. Sonali Burte  
Principal



**Mangaon Court picture taken from college ground**



*GTM*  
Principal  
Ashokdada Sable Law College  
Mangaon-Raigad



# Ashokdada Sable Law College

**LL.B. 3 Year / LL.B. 5 Year / LL.M.**

Tal. Mangaon, Dist. Raigad. 402 104

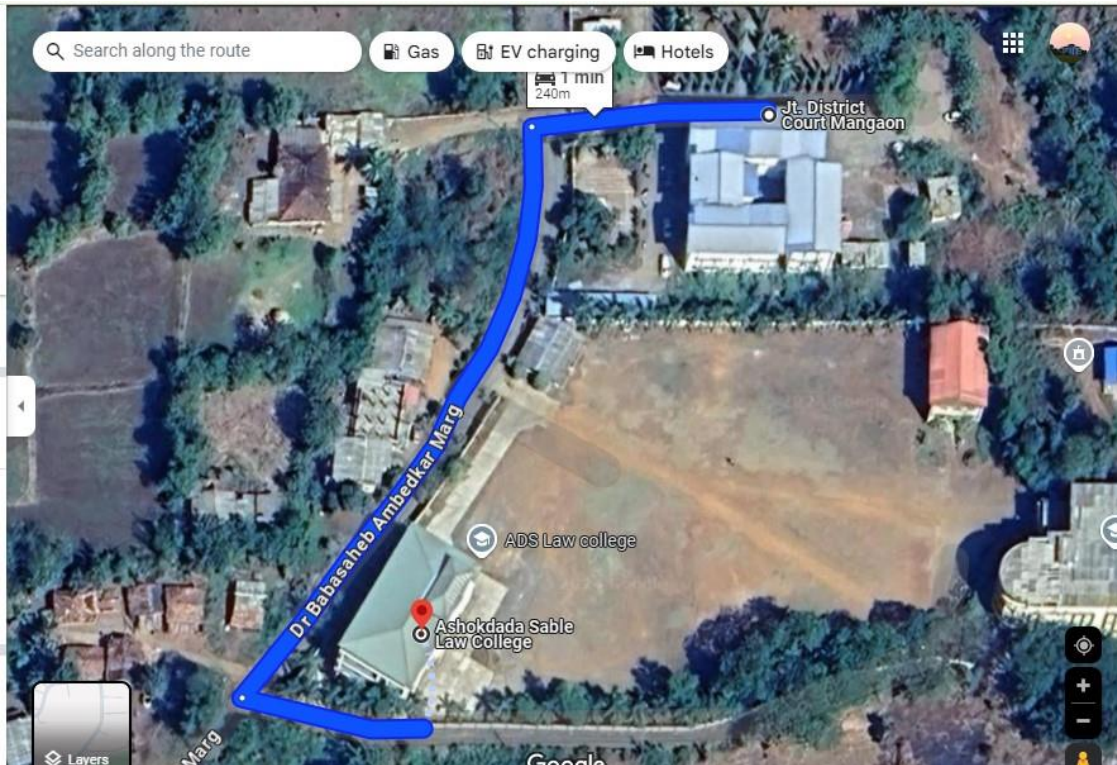
ashokdadasablelawcollege@gmail.com

**Adv. Vinod Ghayal**  
Chairman

**Shri. Rajiv Sable**  
President

**Shri. Krishna Gandhi**  
Secretary

**Dr. Sonali Burte**  
Principal



Google Image Showing Distance Between HEI & Nearest Court of Law



*SB*  
Principal  
Ashokdada Sable Law College  
Mangaon-Raigad